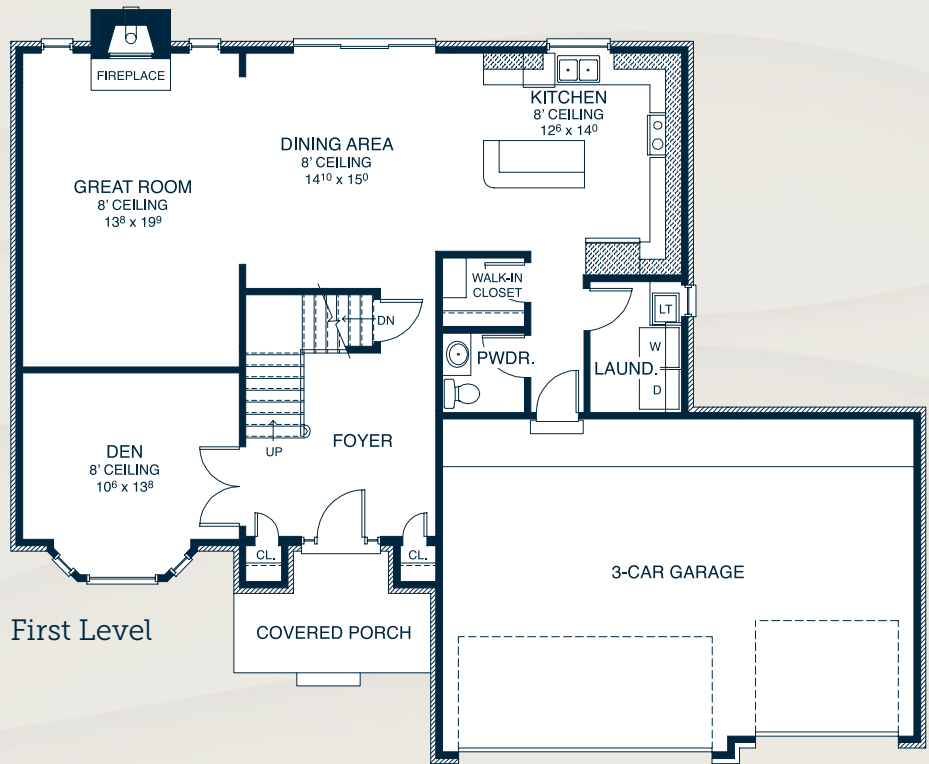
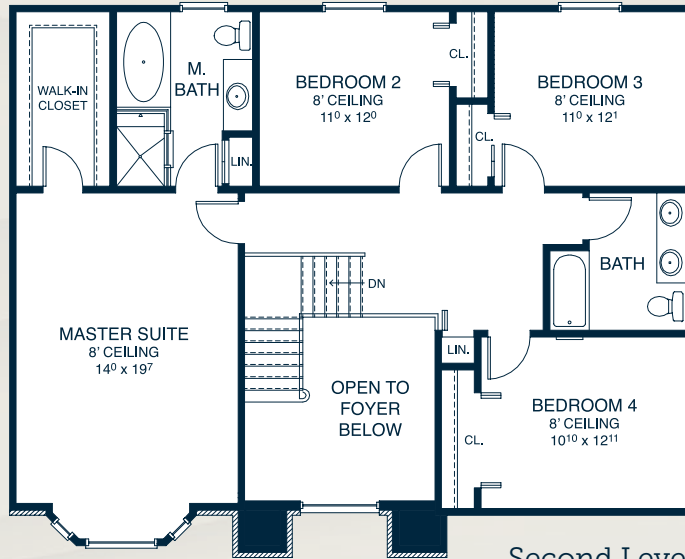


SUGARBUSH Farms

The Whitney \ \ 2,520 sf

- 4 Second floor bedrooms, 2½ baths
- Attached, oversized 3-car garage
- Covered front porch entry into gorgeous two-story foyer
- Open concept design connects great room, dining room and kitchen
- Kitchen window provides natural light and inviting views
- Spacious great room features gas fireplace with painted or stained mantle
- First floor den features a bay window for ample natural light
- First floor powder room off kitchen, ideal for guests
- First floor laundry conveniently located off kitchen provides direct access to garage
- Second floor full bath features dual sinks
- Master bath features stall shower, soaking tub and window for natural light



SUGARBUSH FARMS
586.268.5600

ADMIRAL
HOMES

WWW.ADMIRALHOMESMI.COM

In order to meet homebuyer's expectations, we reserve the right to modify features, price, specifications and/or to change or discontinue models without notice or obligation. Artist's drawings of the elevation and floor plan are not an exact representation or drawn to scale. Floor plan dimensions are approximate. Specific details such as doors, windows, walls and other features depicted herein may vary depending on elevation style and options selected. ©2015 Admiral Homes

