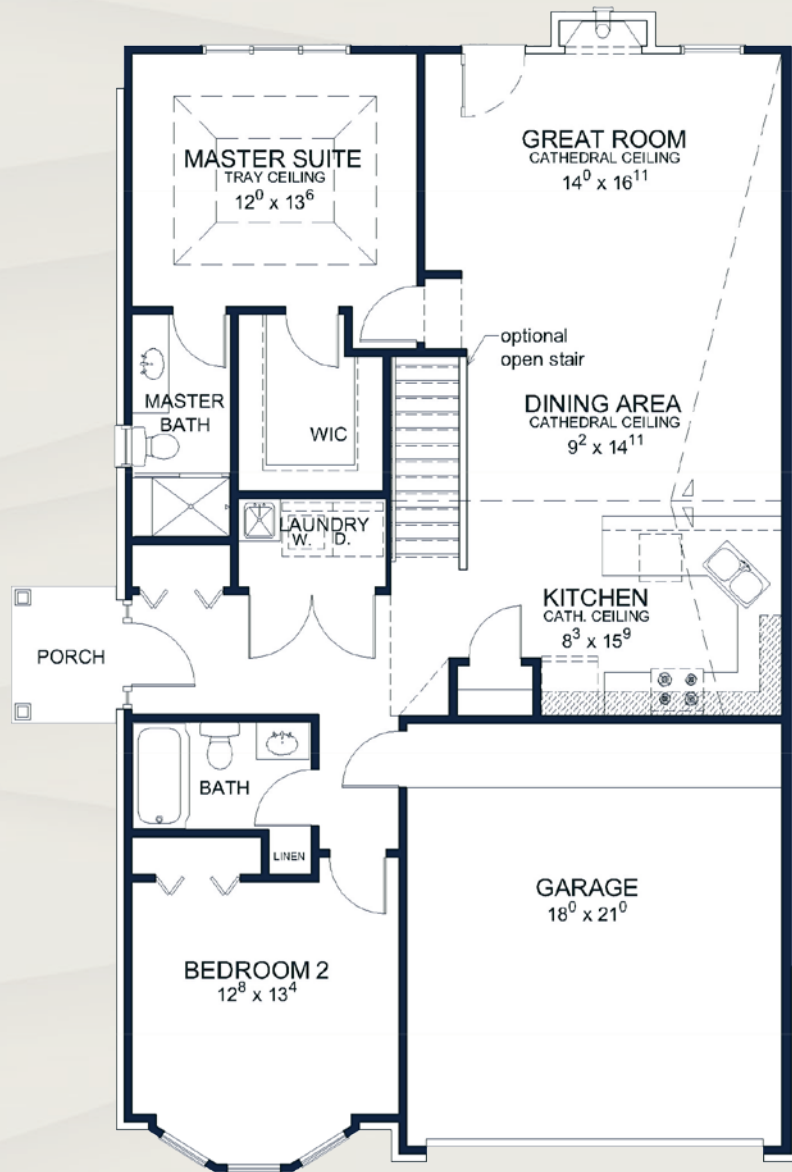


Baypointe \ 1,315 sf

- 2 Bedrooms, 2 baths
- Convenient single-story floor plan
- Front porch entry with direct sightline to kitchen
- Kitchen, dining area and great room feature cathedral ceiling
- U-shaped kitchen with ample counter space
- Dining area off kitchen, perfect for entertaining
- Great room features a second entry door for convenient outdoor access
- Master suite features an elegant tray ceiling and generous walk-in closet
- Laundry room centrally located near kitchen
- Second bedroom with bay window and adjacent bath off of foyer, convenient for guests

WINDMILL POND
14736 KINGS MILL
SHELBY TWP., MI 48315
586.532.4143



First Level

ADMIRAL
**** HOMES ****

WWW.ADMIRALHOMESMI.COM

In order to meet homebuyer's expectations, we reserve the right to modify features, price, specifications and/or to change or discontinue models without notice or obligation. Artist's drawings of the elevation and floor plan are not an exact representation or drawn to scale. Floor plan dimensions are approximate. Specific details such as doors, windows, walls and other features depicted herein may vary depending on elevation style and options selected. © 2015 Admiral Homes

